



---

## Electronic Logbooks

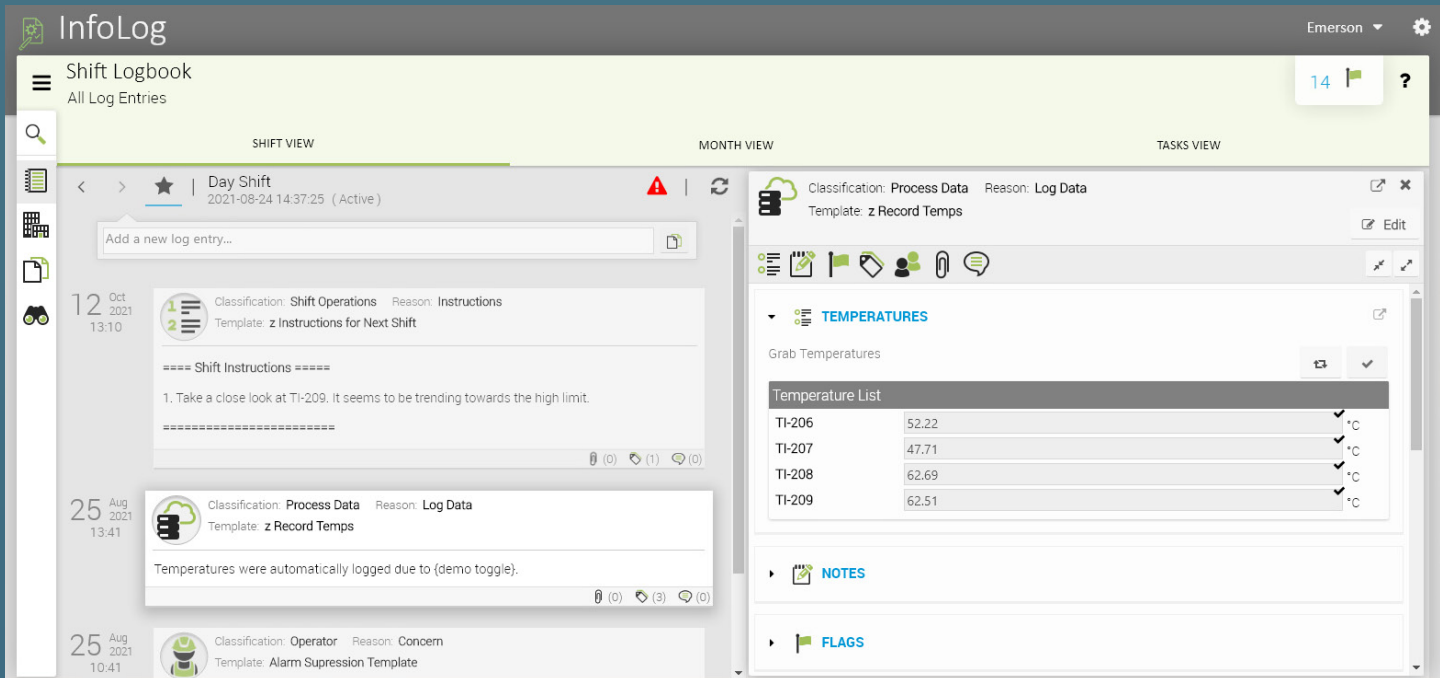




### What is InfoLog?

InfoLog is a browser-based application used to capture electronic records of operator activity as well as plan and track operator tasks during a shift. With InfoLog, operators can record information about daily

operations, view a prioritized task list, and access a shift change dashboard that includes shift status and summary reports. InfoLog is suitable for any event-driven data entry, including laboratory test sample input and alarm annotation.



### Why Choose InfoLog?

As manufacturers continually look for more efficient ways to run their facilities, many are re-evaluating the way data is collected, stored and analyzed. Facilities currently using paper records or spreadsheets to organize data have probably encountered challenges involved with collecting data in a manual format. Switching to a system that electronically and automatically collects data minimizes issues involved with accuracy, security, accessibility, reporting and more.

### Ensure Accurate and Complete Data Collection

InfoLog allows operators to quickly create log entries through simple text entry or by using forms/templates for more comprehensive records. A log entry can include a screen capture of a process control system graphic and associated operating information acquired from an automation system to provide additional context to the incident. The user can include links or references to external documents and add attachments. Not only is the information more complete and easy to read, operators can view past log entries by selecting the day on a calendar. By indexing all log entries to make them searchable, InfoLog delivers a robust knowledge base to your operators to help accelerate problem-solving and decision-making.

The world's leading manufacturing facilities have improved productivity and reduced costs with Infrometric applications.

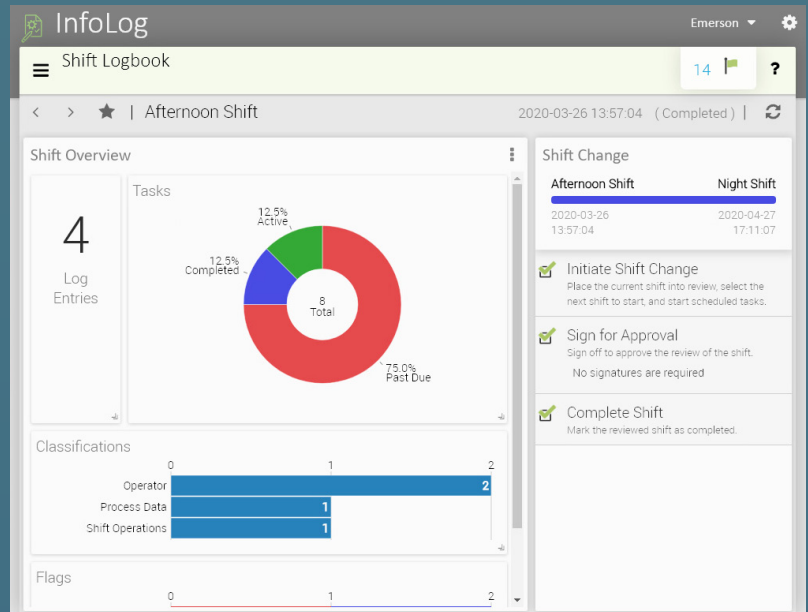
Data collected in a secure, centrally-managed environment.

### Minimize Shift Handover Risk

Shift handover can be a risky part of the day. Communication between the current shift and the new shift is critical to success and safety. InfoLog provides a dashboard that delivers a high level summary of what has happened during a shift as well as on-going tasks. Operators can access more detailed information through classification, status or user configurable filters. If needed, they can easily view past shift summaries as well. InfoLog can also drive a more consistent shift handover process. Critical knowledge, including open tasks, notes, and other non-routine events, is collected and approved as the facility transfers into the next shift.

### Event-Driven

Each InfoLog logbook is associated with an event trigger. Events can be time-based, triggered by an external system or created by authorized users on an ad-hoc basis. Event Monitor is an optional licensed component of InfoLog that enables automatic creation of log entries based on OPC values or SQL database queries.

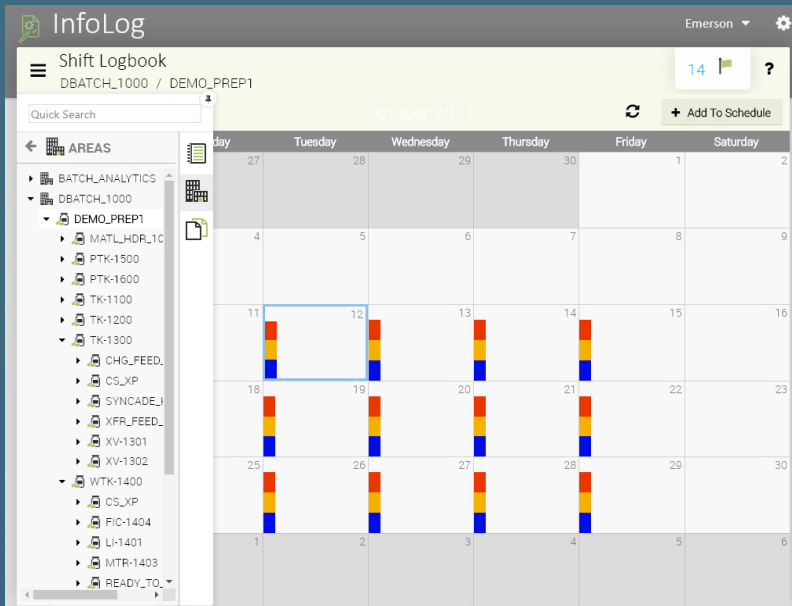


### Intuitive Interface

The user-friendly, intuitive interface means operators can use the application immediately. Task-based actions make “to-do list” set-up, comment capture, search, and report generation easy.

### Security, Traceability and Compliance

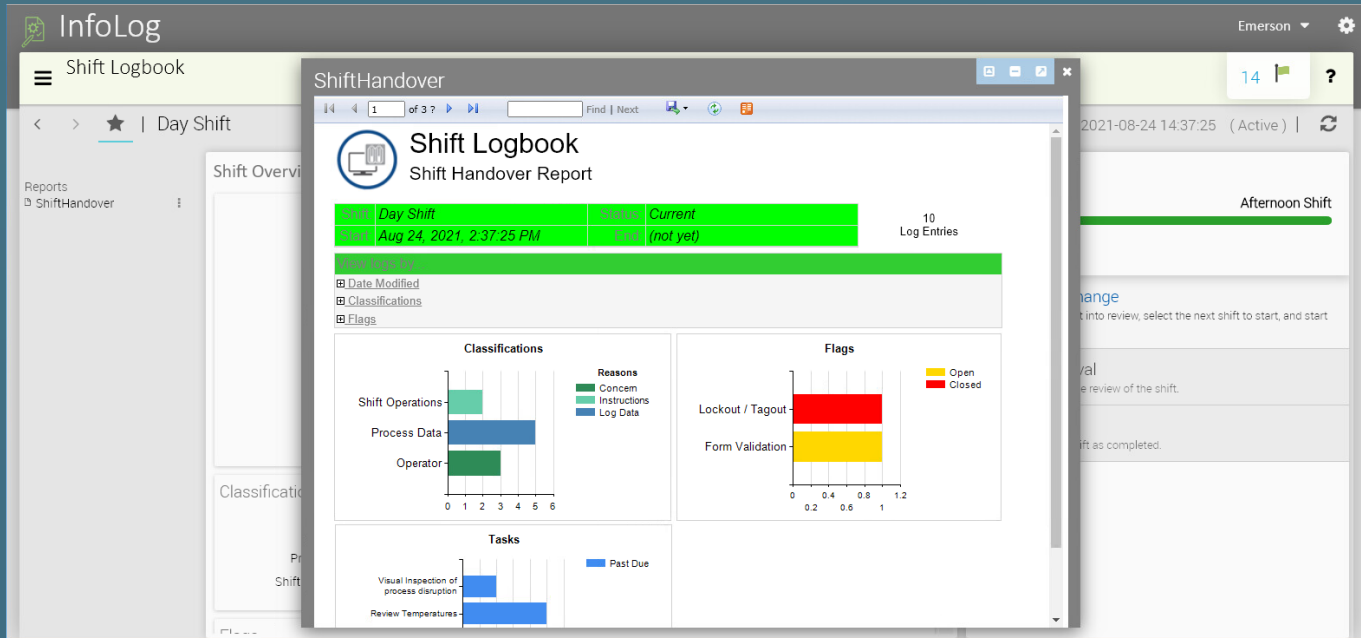
InfoLog was designed from the start to conform with FDA 21 CFR Part 11, Electronic Records and Signatures. All view/enter/edit privileges are tied to a role-based security model. An individual’s authorization to enter and edit data is defined by the user’s role. For example, certain classes of users may be able to enter data, while the authority to edit data may be confined to a subset of users. All transactional actions (insertions, updates, deletions) in Logbooks are recorded in the Audit Trail and stored permanently. Audit Trail documents who, what, where, and when.



**24/7**

Informetric applications are designed for mission-critical production activity, enabling manufacturers to make better decisions.

**InfoLog provides reporting in a configurable environment.**



For more information or to request a demonstration, contact [sales@informetric.com](mailto:sales@informetric.com) or visit [www.informetric.com](http://www.informetric.com).

© 2023 Informetric Systems Inc. All rights reserved.

InfoLog is a trademark of Informetric. Company and/or product names may be trademarks, registered trademarks or service marks of their respective owners.

Publication No. 12110-02112-1

121 Chanlon Rd  
Suite 320  
New Providence, NJ 07974 USA  
1.908.918.0111 • [www.informetric.com](http://www.informetric.com)

**informetric**  
S Y S T E M S

## Specifications

2260	Event Monitor
ASM-IL-EM	Event Monitor 1 Year Support
2250-0005	InfoLog + 5 Users
2250-0025	InfoLog + 25 Users
2250-0150	InfoLog + 150 Users
ASM-IL-0005	InfoLog 1 Year Support - 5 Users
ASM-IL-0025	InfoLog 1 Year Support - 25 Users
ASM-IL-0150	InfoLog 1 Year Support - 150 Users
2251-0005	InfoLog Additional Users - 5
2251-0025	InfoLog Additional Users - 25
2251-0150	InfoLog Additional Users - 150

## Server Prerequisites

Windows Server 2012 or greater  
Microsoft SQL Server 2016 or greater  
Microsoft Internet Information Services (IIS)

## Client Prerequisites

Windows PC with IE11, Edge or Chrome browser  
iPad, iPhone with Safari browser