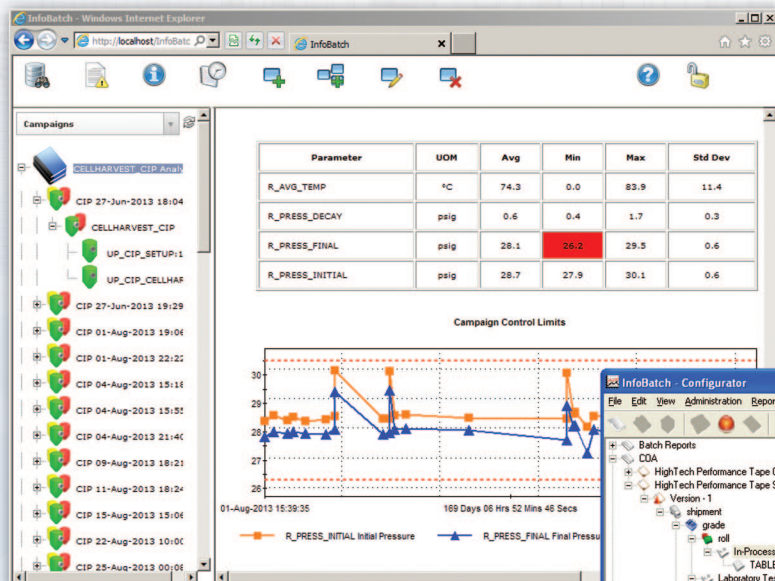


InfoBatch™

Manufacturing Intelligence. Simplified.

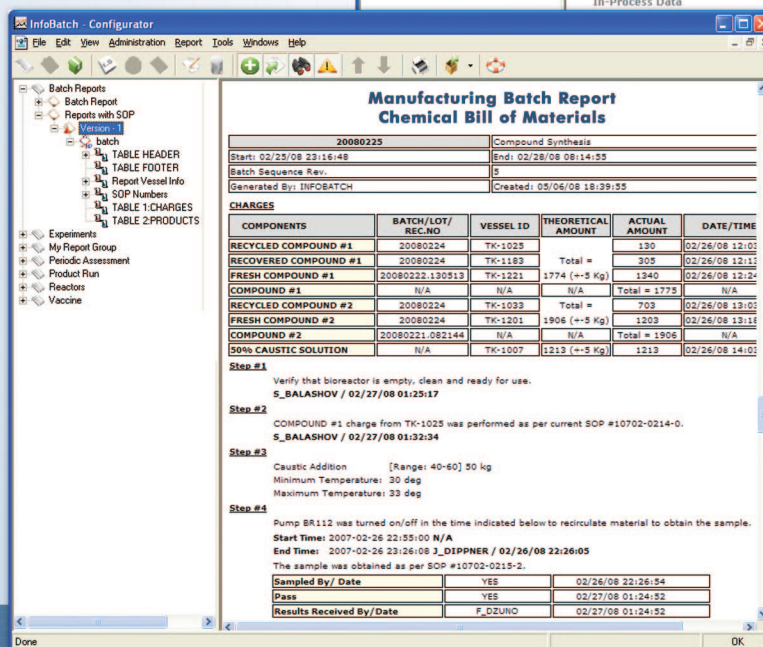
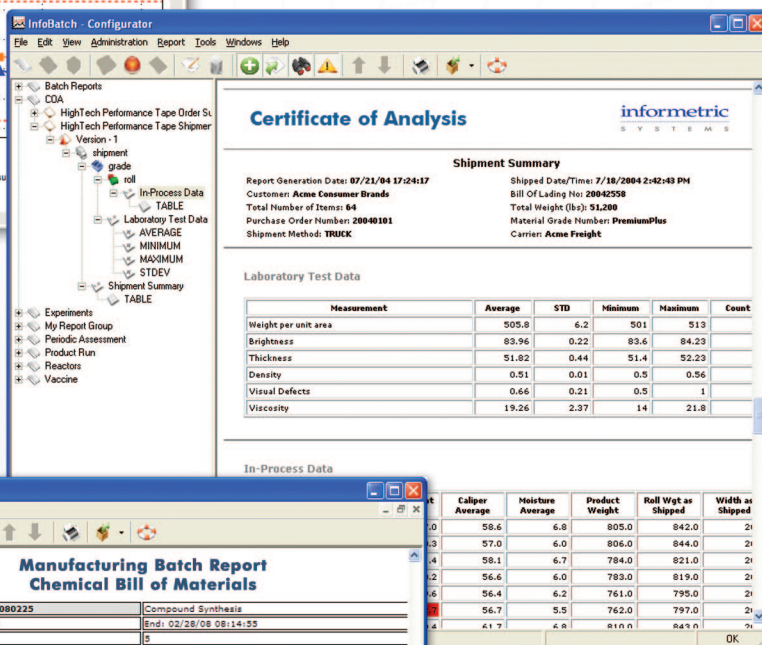
informetric
S Y S T E M S

InfoBatch™ FLEXIBLE ELECTRONIC REPORTING



InfoBatch is a manufacturing reporting suite that simplifies compliance documentation, production reporting and process analysis across many industries. By addressing the life cycle issues associated with programmed reporting solutions, InfoBatch has enabled manufacturers to improve productivity and reduce costs.

InfoBatch is not limited to batch reporting and has been applied for manufacturing intelligence in a variety of batch, semi-continuous and continuous processes.



Informetric applications adhere to current industry-standard communication and data access protocols. As a result, Informetric software can be integrated with existing legacy systems as well as support new applications.

Data from anywhere, when you want it, however you want to see it.

On demand reports from the source with no replication

InfoBatch does not replicate data. Instead, data is retrieved from the original source each time a report is generated. By eliminating replication, InfoBatch avoids many cost, complexity, reliability and validation issues associated with data replication.

All-encompassing

InfoBatch aggregates information from various data sources into a single "virtual database". Reports can include any data related to process and quality including critical parameters, alarms, events, operator actions, trends, detailed exception/limit violation summaries and cycle times associated with critical operations.

Industry-standard compatibility



Conformance to industry-standard data access protocols ensures compatibility with

virtually all process historians, batch historians, LIMS, MES and ERP systems. As a result, InfoBatch can be applied without incurring major infrastructure upgrade costs.

Easy to configure and use

User-friendly Windows® and web browser client applications reduce training costs.

Automatic report generation

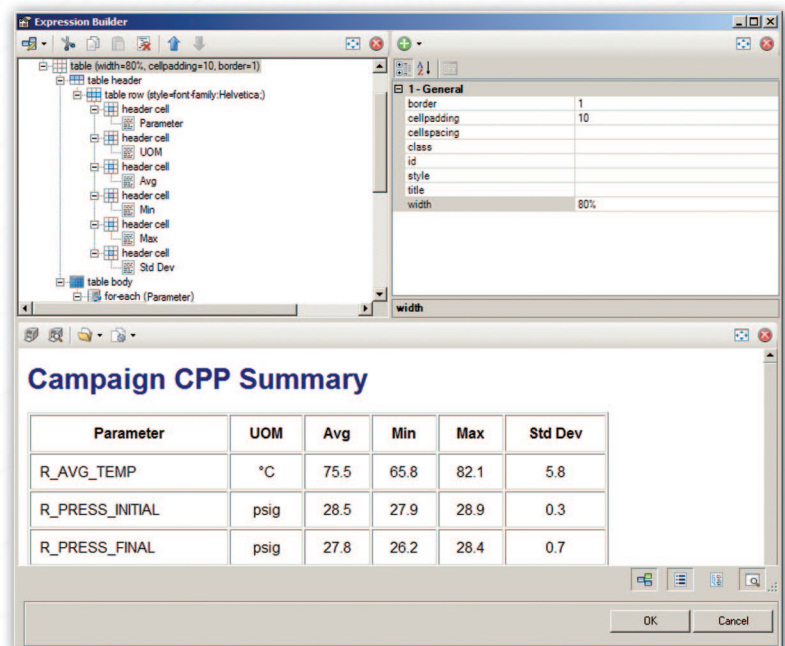
InfoBatch AutoGen™ automatically generates and prints PDF documents on a time and event basis.

Regulatory compliance

InfoBatch is well suited for regulated facilities and was designed from the start to conform to FDA 21 CFR Part 11, Electronic Records and Signatures. Rigorous security, audit trails and version control ensure compliance with FDA regulations and simplify life cycle management.

Applications

Batch Reporting
Equipment Cleaning & Sterilization
Production Reporting
Process Engineering
Certificates of Analysis
Process Analytical Technology (PAT)
Overall Equipment Effectiveness (OEE)



Designed for engineers, not programmers

With structured data models and an interactive report layout tool, InfoBatch is configured, not programmed.

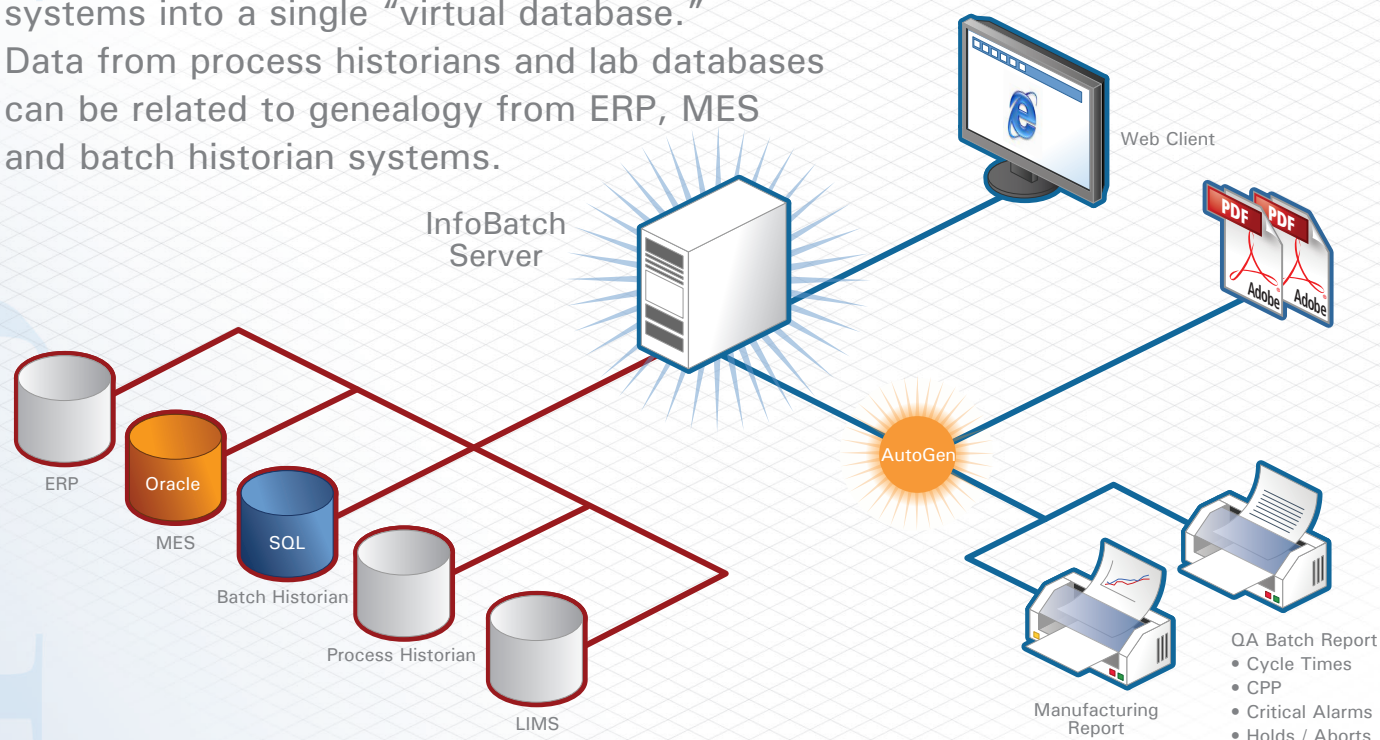
30% of Fortune 100 manufacturers rely on Informetric applications to maximize quality and productivity.

informetric
S Y S T E M S

InfoBatch™

combines multiple manufacturing information systems into a single “virtual database.”

Data from process historians and lab databases can be related to genealogy from ERP, MES and batch historian systems.



InfoBatch is a reporting suite that acquires product, process and event information from a wide range of manufacturing systems. With configurable data models and an extensive connector library, InfoBatch is well suited for any application requiring structured, centrally-managed reports.

informetric S Y S T E M S

1025 Solano Avenue 18 Bank Street
Albany, CA 94706 USA Summit, NJ 07901 USA
1.908.918.0111 • www.informetric.com

© 2014 Informetric Systems Inc. All rights reserved.
InfoBatch is a trademark of Informetric.
All other company and/or product names may be trademarks, registered trademarks or service marks of their respective owners.

The paper on which this document is printed was manufactured in a facility using Informetric quality management software.

Publication No. 10807-0215-4

SPECIFICATIONS

3001	InfoBatch Server
3020	InfoBatch Configurator
3030	InfoBatch Navigator
3040	InfoBatch AutoGen
3050	InfoBatch Web Server
3111	InfoBatch OPC HDA Connector
3115	InfoBatch ODBC Connector ⁽¹⁾
3120	InfoBatch Connector for DeltaV Batch Historian
3122	InfoBatch Connector for DeltaV Control Studio
3130	InfoBatch Connector for PI
3140	InfoBatch Connector for AspenTech InfoPlus.21
3150	InfoBatch Connector for Rockwell Historian
3151	InfoBatch Connector for Rockwell Batch Historian
3160	InfoBatch Connector for GE Proficy Historian (iHistorian)
3161	InfoBatch Connector for GE Proficy SQL
3170	InfoBatch Connector for Wonderware Historian

Consult Informetric for a complete list of Connectors.

⁽¹⁾ The ODBC Connector can be configured to integrate virtually any database.