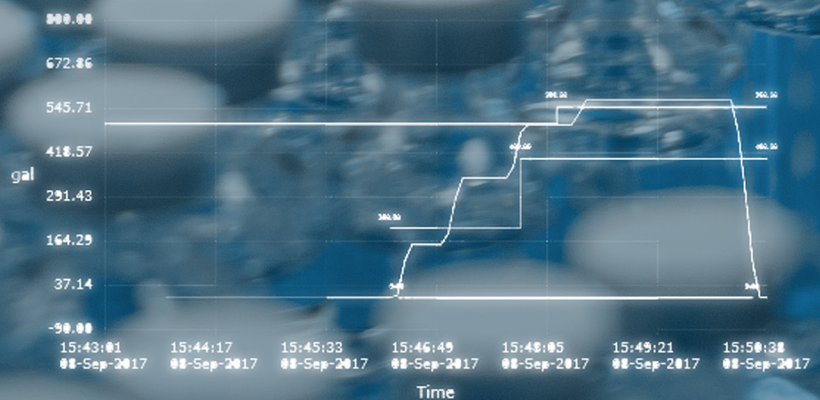


Better Reporting, Better Decisions

Saves the short and long form of all rows and makes the rows associated with the table.					
Procedure	Link Procedure	Spaceman	Planet	Time	Book
00000_YKTH_TRAINS	N/A	N/A	N/A	00-Sep-2017 15:43:00	00-Sep-2017-15
00000_YKTH_TRAINS	UP_FLL_F000_TC1-1	N/A	N/A	00-Sep-2017 15:43:00	00-Sep-2017-15
00000_YKTH_TRAINS	UP_FLL_F000_TC2-1	N/A	N/A	00-Sep-2017 15:43:00	00-Sep-2017-15
00000_YKTH_TRAINS	UP_FLL_F000_TC3-1	N/A	N/A	00-Sep-2017 15:43:00	00-Sep-2017-15
00000_YKTH_TRAINS	UP_FLL_F000_TC1-1	00_FLL_F000_TC1-1	N/A	00-Sep-2017 15:43:00	00-Sep-2017-15
00000_YKTH_TRAINS	UP_FLL_F000_TC2-1	00_FLL_F000_TC1-1	N/A	00-Sep-2017 15:43:00	00-Sep-2017-15
00000_YKTH_TRAINS	UP_FLL_F000_TC3-1	00_FLL_F000_TC1-1	N/A	00-Sep-2017 15:43:00	00-Sep-2017-15
00000_YKTH_TRAINS	UP_FLL_F000_TC1-1	00_FLL_F000_TC1-1	00G_F000_TC1-1	00-Sep-2017 15:43:00	00-Sep-2017-15
00000_YKTH_TRAINS	UP_FLL_F000_TC2-1	00_FLL_F000_TC1-1	00G_F000_TC1-1	00-Sep-2017 15:43:00	00-Sep-2017-15
00000_YKTH_TRAINS	UP_FLL_F000_TC3-1	00_FLL_F000_TC1-1	00G_F000_TC1-1	00-Sep-2017 15:43:00	00-Sep-2017-15
00000_YKTH_TRAINS	UP_RVW_TO_XPR1-1	N/A	N/A	00-Sep-2017 15:43:00	00-Sep-2017-15
00000_YKTH_TRAINS	UP_CHG_KCV_PPRM1-1	N/A	N/A	00-Sep-2017 15:43:00	00-Sep-2017-15
00000_YKTH_TRAINS	UP_RVW_TO_XPR1-1	00_FTK_KCV_WTR1-1	N/A	00-Sep-2017 15:43:00	00-Sep-2017-15
00000_YKTH_TRAINS	UP_RVW_TO_XPR1-1	00_FTK_KCV_WTR1-1	N/A	00-Sep-2017 15:43:00	00-Sep-2017-15
00000_YKTH_TRAINS	UP_CHG_KCV_PPRM1-1	00_FTK_KCV_WTR1-1	KSCV_WTR1-1	00-Sep-2017 15:43:00	00-Sep-2017-15
00000_YKTH_TRAINS	UP_RVW_TO_XPR1-1	00_FTK_KCV_WTR1-1	READY_TO_XPR1-1	00-Sep-2017 15:43:00	00-Sep-2017-15

[illegible]



InfoBatch

MISSION CRITICAL REPORTING

Batch Report
ID: 20190104.165438
Report Generated: 04-Jan-2019 15:05:36

Batch Summary

Batch ID	Start	End	Duration
20190104.165438	04-Jan-2019 05:32:14	04-Jan-2019 14:51:11	09 Hrs 18 Mins 57 Secs

Unit Summary

Unit Procedure	Unit	Start Date/Time	End Date/Time	Duration
UP_DEMO_CIP01-1	LIC-3301	04-Jan-2019 05:33:11	04-Jan-2019 11:50:42	06 Hrs 17 Mins 31 Secs
UP_DEMO_FEED1-1	LIC-3401	04-Jan-2019 12:01:53	04-Jan-2019 14:23:20	02 Hrs 23 Mins 25 Secs

Alarm Summary

Date/Time	Area	Module	Alarm Type	Alarm Level	Description
04-Jan-2019 06:23:58	DEMO_AREA_1000	LIC-3301/AI3301_01	LOW	10-POINT	Low Alarm Value 2.60177 Limit 0
04-Jan-2019 06:24:18	DEMO_AREA_1000	LIC-3301/AI3301_01	IOF	10-POINT	General I/O Failure
04-Jan-2019 06:24:18	DEMO_AREA_1000	LIC-3301/AI3301_01	HIGH	10-POINT	High Alarm Value 5.134552 Limit 10
04-Jan-2019 06:25:02	DEMO_AREA_1000	LIC-3301/PDI3301_01	LOW	10-POINT	Low Alarm Value 0.302235 Limit 0
04-Jan-2019 06:26:07	DEMO_AREA_1000	LIC-3301/PDI3301_01	LOW	10-POINT	Low Alarm Value 1.35348 Limit 0
04-Jan-2019 06:27:00	DEMO_AREA_1000	LIC-3301/PDI3301_01	LOW	10-POINT	Low Alarm Value -0.00989557 Limit 0

Batch Events

Date/Time	Area	Process Call	Phase Module	Event Type	Message
04-Jan-2019 05:32:14			VA1_PR_DEMO(V\	State Command	State Commanded: START

Operator Prompts

Date/Time	Area	Process Call	Phase Module	Event Type
03-Jan-2019 14:24:12	RSP	RSP_KCELL	A1_PR_DEMO_SETUP	Prompt Response [N]

Critical Process Parameters

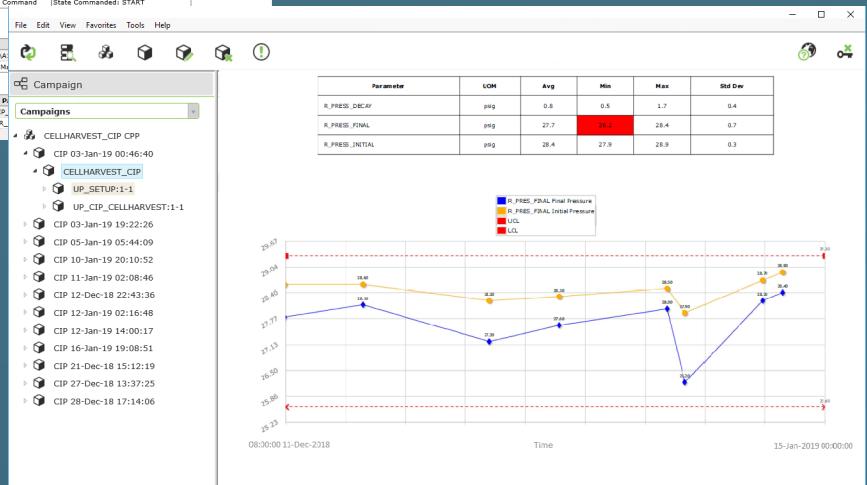
Date/Time	Process Call	Unit	Phase Module
03-Jan-2019 15:31:57	CIP_KCELL	LIC-3301	CIP_BURST_RINSE

Campaigns

- CELLHARVEST_CIP CPP
- CIP 03-Jan-19 00:46:40
- CELLHARVEST_CIP
- UP_SETUP:1-1
- UP_CIP_CELLHARVEST:1-1
- CIP 03-Jan-19 19:22:26
- CIP 05-Jan-19 05:44:09
- CIP 10-Jan-19 20:10:52
- CIP 11-Jan-19 02:08:46
- CIP 12-Dec-18 22:43:36
- CIP 12-Jan-19 02:16:48
- CIP 12-Jan-19 14:00:17
- CIP 16-Jan-19 19:08:51
- CIP 21-Dec-18 15:12:19
- CIP 27-Dec-18 13:37:25
- CIP 28-Dec-18 17:14:06

InfoBatch is a manufacturing reporting suite that simplifies production reporting, compliance documentation and process analysis across many industries. Through unparalleled scalability and robustness, InfoBatch has enabled manufacturers to improve productivity and reduce costs.

InfoBatch is particularly well-suited to mission critical reporting that requires contextualization of data from multiple systems. InfoBatch is not limited to batch reporting and has been applied for manufacturing intelligence in a variety of batch, semi-continuous and continuous processes.



Effective management and re-use of global configuration empowers organizations to standardize data presentation for end users. InfoBatch's unique Library Manager enables common report elements such as queries and output to be managed under version control and propagated to multiple reports. These change control aspects are important over the extended life cycles generally associated with mission critical enterprise systems.

6. Bill of Materials
This section displays materials that were dispensed for use in this Order.

Component	Target Quantity	Lower/Upper Tolerance	Total Quantity	Weigh Sequence
(RM100) Glucose	20.00 gr	19.80/20.40 gr	19.80/20.40 gr	2

Area Dispense
This section displays inventory materials that were consumed in the execution of this Order.

Component	Target Quantity	Lower/Upper Tolerance	Total Quantity	Weigh Sequence
(RM200) RH200	40.00 gr	39.40/40.80 gr	40.00 gr	1

Output Material
This section displays material that was generated during execution of this Order.

Component	Target Quantity	Total Quantity	Weigh Sequence
(In-Media) Media	15.00 l	40.00 l	1

7. Executed Steps
This section displays recipe steps completed during execution of this Order.

[MANUAL] Instruction Logon - [Complete]
Instruction Path: PRC_LS_MEDIA_PHASE3_BETA1/UP_LS_MEDIA_PHASE3_BETA1/OP_LS_SETUP_BETA1/WI_LS_LOGIN_BETA1(1)
Start Date: 23-Jun-2016 14:36:34 End Date: 23-Jun-2016 14:36:34
Please review the referenced SOP before continuing.

Required Signature Electronic Signature Date: 23-Jun-2016 14:36:34
Operator: Jan (JAM)

The world's leading manufacturing facilities have improved productivity and reduced costs with Informetric applications.

Data from anywhere, when you want it, however you want to see it.

WHAT SETS INFOBATCH APART



Connectivity

InfoBatch aggregates information from various systems into a single report.

Common data sources include process historians, batch historians, LIMS, MES and ERP systems. InfoBatch offers a library of preconfigured connectors and can be integrated with virtually any database through site configuration.



Contextualization

InfoBatch report configuration and runtime behavior are based on configurable data models. These models enable data from disparate sources to be contextualized according to a common framework. Example data models include S88 batch procedural model, S95 manufacturing order execution, and sales order/shipment hierarchies.



Productivity

InfoBatch is a commercial off-the-shelf application, reducing deployment, compliance, and maintenance costs. The InfoBatch query builder and layout editor enable users with limited understanding of the underlying data sources to specify report content and format.

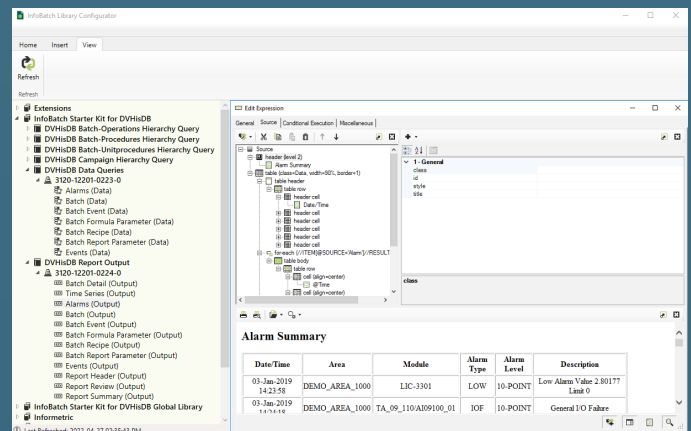
The InfoBatch Library Manager streamlines report configuration by facilitating reuse of common content. Changes to library content are propagated to multiple reports, thus eliminating time-consuming copy-paste activities. The Library also simplifies change control and documentation activities.



Data Integrity

InfoBatch does not replicate data. Instead, data is retrieved from the original source each time a report is generated. By eliminating replication, InfoBatch avoids many of the cost, complexity, reliability and validation issues associated with other reporting applications.

InfoBatch is well suited to any reporting application which is subject to regulatory oversight, such as life sciences, emissions monitoring and safety-critical systems. InfoBatch was designed from the start to conform to FDA 21 CFR Part 11, Electronic Records and Signatures and Annex 11: Computerised Systems. Rigorous security, audit trails and version control ensure compliance with regulations and simplify life cycle management.



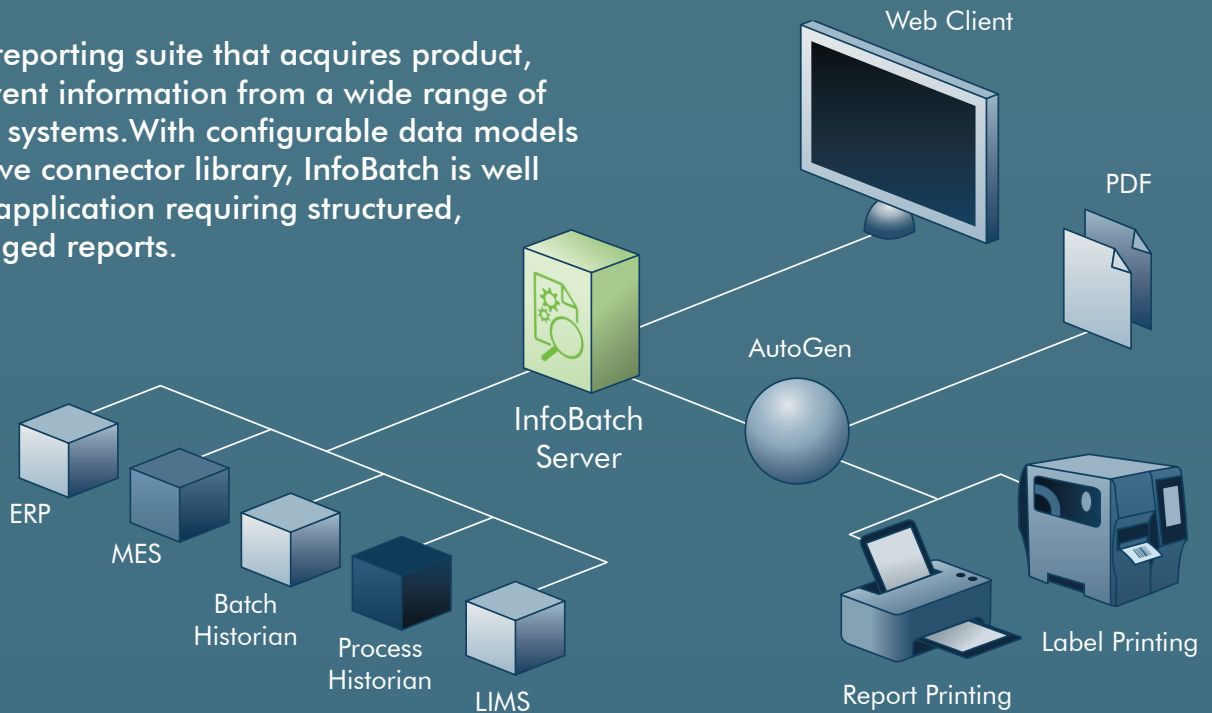
All configuration-affecting report content and layout are managed through the intuitive Configurator.

24/7

Informetric applications are designed for mission-critical production activity, enabling manufacturers to make better decisions.



InfoBatch is a reporting suite that acquires product, process and event information from a wide range of manufacturing systems. With configurable data models and an extensive connector library, InfoBatch is well suited for any application requiring structured, centrally managed reports.



Applications

Batch Reporting
Equipment Tracking
Material Tracking
Label Printing
Order Execution History
Exception Reporting
Audit Trail Reporting
Alarm Analysis
Certificates of Analysis
Process Analytical Technology (PAT)
Overall Equipment Effectiveness (OEE)
Campaign Reporting
Cycle Time Analysis

121 Chanlon Rd
Suite 320
New Providence, NJ 07974 USA
1.908.918.0111 • www.informetric.com

© 2022 Informetric Systems Inc. All rights reserved.
InfoBatch is a trademark of Informetric. Company and/or product names may be trademarks, registered trademarks or service marks of their respective owners.

Publication No. 10811-0217-7

informetric
S Y S T E M S

Model Numbers

3001	InfoBatch Server
3020	InfoBatch Configurator
3040	InfoBatch AutoGen
3050	InfoBatch Web Server
3060	InfoBatch Report History
3111	InfoBatch OPC HDA Connector
3115	InfoBatch ODBC Connector ^{(1)/(2)}
3120	InfoBatch Connector for DeltaV Batch Historian
3122	InfoBatch Connector for DeltaV Control Studio
3125	InfoBatch Connector for Syncade
3130	InfoBatch Connector for PI
3131	InfoBatch Connector for PI Asset Framework
3140	InfoBatch Connector for AspenTech InfoPlus.21
3150	InfoBatch Connector for Rockwell FactoryTalk Historian
3151	InfoBatch Connector for Rockwell FactoryTalk Batch
3160	InfoBatch Connector for GE Proficy Historian
3170	InfoBatch Connector for AVEVA Historian (Wonderware)
3180	InfoBatch Connector for InfluxDB

Consult Informetric for a complete list of Connectors.

(1) The ODBC Connector can be configured to integrate virtually any database.
(2) The ODBC Connector also supports OLEDB Connections.

INTEGRATE. AGGREGATE. REPORT.