



# InfoBatch™

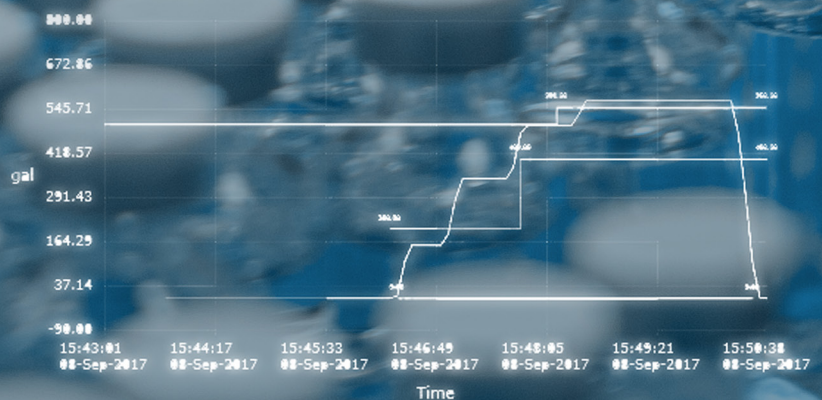
## Better Reporting, Better Decisions

Report Name: B000000001 TRNG B000000001  
Run ID: 2617000000000000  
Run Date/Time: 08-Sep-2017 15:43:01  
Range Name: B000000001 TRNG  
Report Version: 3  
Report Creation Time: 08-Sep-2017 15:43:01

Procedure	Unit Procedure	Operation	Phase	Start Time	End Time
B000000001 TRNG	N/A	N/A	N/A	08-Sep-2017 15:43:01	08-Sep-2017 15:43:01
B000000001 TRNG	UP_FILL_P000_TK1-1	N/A	N/A	08-Sep-2017 15:43:01	08-Sep-2017 15:43:01
B000000001 TRNG	UP_FILL_P000_TK2-1	N/A	N/A	08-Sep-2017 15:43:01	08-Sep-2017 15:43:01
B000000001 TRNG	UP_FILL_P000_TK3-1	N/A	N/A	08-Sep-2017 15:43:01	08-Sep-2017 15:43:01
B000000001 TRNG	UP_FILL_P000_TK1-1	EP_FILL_P000_TK1-1	N/A	08-Sep-2017 15:43:01	08-Sep-2017 15:43:01
B000000001 TRNG	UP_FILL_P000_TK2-1	EP_FILL_P000_TK2-1	N/A	08-Sep-2017 15:43:01	08-Sep-2017 15:43:01
B000000001 TRNG	UP_FILL_P000_TK3-1	EP_FILL_P000_TK3-1	N/A	08-Sep-2017 15:43:01	08-Sep-2017 15:43:01
B000000001 TRNG	UP_FILL_P000_TK1-1	EP_FILL_P000_TK1-1	CHG_P000_TK1-1	08-Sep-2017 15:43:01	08-Sep-2017 15:43:01
B000000001 TRNG	UP_FILL_P000_TK2-1	EP_FILL_P000_TK2-1	CHG_P000_TK2-1	08-Sep-2017 15:43:01	08-Sep-2017 15:43:01
B000000001 TRNG	UP_FILL_P000_TK3-1	EP_FILL_P000_TK3-1	CHG_P000_TK3-1	08-Sep-2017 15:43:01	08-Sep-2017 15:43:01
B000000001 TRNG	UP_RBY_T0_WFR-1-1	N/A	N/A	08-Sep-2017 15:43:01	08-Sep-2017 15:43:01
B000000001 TRNG	UP_CHG_P000_P000-1	N/A	N/A	08-Sep-2017 15:43:01	08-Sep-2017 15:43:01
B000000001 TRNG	UP_CHG_P000_P000-1	EP_STA_RCV_WTR-1-1	N/A	08-Sep-2017 15:43:01	08-Sep-2017 15:43:01
B000000001 TRNG	UP_RBY_T0_WFR-1-1	EP_RBY_T0_WFR-1-1	N/A	08-Sep-2017 15:43:01	08-Sep-2017 15:43:01
B000000001 TRNG	UP_CHG_P000_P000-1	EP_STA_RCV_WTR-1-1	RSCV_WTR-1-1	08-Sep-2017 15:43:01	08-Sep-2017 15:43:01
B000000001 TRNG	UP_RBY_T0_WFR-1-1	EP_RBY_T0_WFR-1-1	READY_T0_WFR-1-1	08-Sep-2017 15:43:01	08-Sep-2017 15:43:01

Level Section

Level (Reactor B000000001)  
Low Limit: R\_FILL\_LVLML\_LLLM  
High Limit: R\_FILL\_LVLML\_HLLM  
Setpoint: R\_FILL\_LVLML\_SP



Generation	Duration	Tag	Tag Description	Unit	Exception Type	Alarm Priority	Low or High Limit	Min/Max Value	Engineering Units	Associated Process
08-Sep-2017 15:43:21	0 00:02:14	FRSPLUM136	N/A	N/A	MAINT_ALM	11- WARNING	N/A	N/A	N/A	UP_FILL_P000_TK3-1/EP_FILL_P000_TK3-1
08-Sep-2017 15:43:46	Alarm and time not found	PC701_02	Bus Top Proc	0701	LE_L0_ALM	15- CRITICAL	2	1.99216	psi	UP_RBY_T0_WFR-1-1/EP_RBY_T0_WFR-1-1
08-Sep-2017 15:44:06	0 00:02:10	LIC-10-001	Brum Level	00101	HE-H0_ALM	11- WARNING	-1	-0.93437	gal	UP_RBY_T0_WFR-1-1/EP_RBY_T0_WFR-1-1
08-Sep-2017 15:44:26	0 00:00:30	PC701_21	Bus Tray#4	0701	LE_L0_ALM	15- CRITICAL	1	-0.15411	psi	UP_RBY_T0_WFR-1-1/EP_RBY_T0_WFR-1-1
08-Sep-2017 15:44:55	0 00:02:30	FRSPLUM133	N/A	N/A	MAINT_ALM	11- WARNING	N/A	N/A	N/A	UP_RBY_T0_WFR-1-1/EP_RBY_T0_WFR-1-1
08-Sep-2017 15:45:00	0 00:00:00	FRSPLUM133	N/A	N/A	MAINT_ALM	11- WARNING	N/A	N/A	N/A	UP_RBY_T0_WFR-1-1/EP_RBY_T0_WFR-1-1



# InfoBatch

## MISSION CRITICAL REPORTING

**Batch Report**  
ID: 20190104.165438  
Report Generated: 04-Jan-2019 15:05:36

**Batch Summary**

Batch ID	Start	End	Duration
20190104.165438	04-Jan-2019 05:32:14	04-Jan-2019 14:51:11	09 Hrs 18 Mins 57 Secs

**Unit Summary**

Unit Procedure	Unit	Start Date/Time	End Date/Time	Duration
UP_DEMO_CIP01-1	LIC-3301	04-Jan-2019 05:32:11	04-Jan-2019 11:50:42	06 Hrs 17 Mins 31 Secs
UP_DEMO_FEED1-1	LIC-3401	04-Jan-2019 12:01:53	04-Jan-2019 14:23:20	02 Hrs 23 Mins 25 Secs

**Alarm Summary**

Date/Time	Area	Module	Alarm Type	Alarm Level	Description
04-Jan-2019 06:23:58	DEMO_AREA_1000	LIC-3301/PD3301_01	LOW	10-POINT	Low Alarm Value 2.60177 Limit 0
04-Jan-2019 06:24:18	DEMO_AREA_1000	LIC-3301/AI3301_01	IOF	10-POINT	General I/O Failure
04-Jan-2019 06:24:18	DEMO_AREA_1000	LIC-3301/AI3301_01	HIGH	10-POINT	High Alarm Value 0.134552 Limit 0
04-Jan-2019 06:25:02	DEMO_AREA_1000	LIC-3301/PD3301_01	LOW	10-POINT	Low Alarm Value 0.302235 Limit 0
04-Jan-2019 06:26:07	DEMO_AREA_1000	LIC-3301/PD3301_01	LOW	10-POINT	Low Alarm Value 1.35348 Limit 0
04-Jan-2019 06:27:00	DEMO_AREA_1000	LIC-3301/PD3301_01	LOW	10-POINT	Low Alarm Value -0.00989557 Limit 0

**Batch Events**

Date/Time	Area	Process Call	Phase Module	Event Type	Message
04-Jan-2019 05:32:14			VA1_PR_DEMO(V\	State Command	State Commanded: START

**Operator Prompts**

Date/Time	Area	Process Call	Phase Module	Event Type
03-Jan-2019 14:24:12	RSP	RSP_KCELL	A1_PR_DEMO_SETUP	Prompt Response

**Critical Process Parameters**

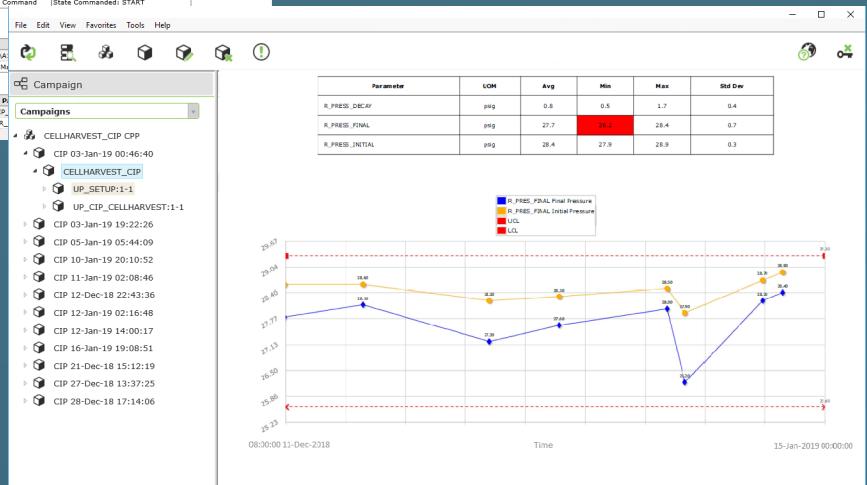
Date/Time	Process Call	Unit	Phase Module
03-Jan-2019 15:31:57	CIP_KCELL	LIC-3301	CIP_BURST_RINSE

**Campaigns**

- CELLHARVEST\_CIP CPP
- CIP 03-Jan-19 00:46:40
- CELLHARVEST\_CIP
- UP\_SETUP:1-1
- UP\_CIP\_CELLHARVEST:1-1
- CIP 03-Jan-19 19:22:26
- CIP 05-Jan-19 05:44:09
- CIP 10-Jan-19 20:10:52
- CIP 11-Jan-19 02:08:46
- CIP 12-Dec-18 22:43:36
- CIP 12-Jan-19 02:16:48
- CIP 12-Jan-19 14:00:17
- CIP 16-Jan-19 19:08:51
- CIP 21-Dec-18 15:12:19
- CIP 27-Dec-18 13:37:25
- CIP 28-Dec-18 17:14:06

InfoBatch is a manufacturing reporting suite that simplifies production reporting, compliance documentation and process analysis across many industries. Through unparalleled scalability and robustness, InfoBatch has enabled manufacturers to improve productivity and reduce costs.

InfoBatch is particularly well-suited to mission critical reporting that requires contextualization of data from multiple systems. InfoBatch is not limited to batch reporting and has been applied for manufacturing intelligence in a variety of batch, semi-continuous and continuous processes.



**Order Management**

**6. Bill of Materials**

This section displays materials that were dispensed for use in this Order.

Component	Target Quantity	Lower/Upper Tolerance	Total Quantity	Weigh Sequence
(RM100) Glucose	20.00 gr	19.80/20.40 gr	20.00 gr	2

**Area Dispense**

This section displays inventory materials that were consumed in the execution of this Order.

Component	Target Quantity	Lower/Upper Tolerance	Total Quantity	Weigh Sequence
(RM200) RH200	40.00 gr	39.40/40.80 gr	40.00 gr	1

**Output Material**

This section displays material that was generated during execution of this Order.

Component	Target Quantity	Total Quantity	Weigh Sequence
(In-Media) Media	15.00 l	40.00 l	1

**7. Executed Steps**

This section displays recipe steps completed during execution of this Order.

Instruction Path	Start Date	End Date
PRC_LS_MEDIA_PHASE1_BETA1/UP_LS_MEDIA_PHASE1_BETA1/OP_LS_SETUP_BETA1/WI_LS_LOGIN_BETA1(1)	23-Jun-2016 14:36:34	23-Jun-2016 14:36:34

Please review the referenced SOP before continuing.

**Required Signature**

Operator	Electronic Signature	Date
Jan (JAM)		23-Jun-2016 14:36:34

Effective management and re-use of global configuration empowers organizations to standardize data presentation for end users. InfoBatch's unique Library Manager enables common report elements such as queries and output to be managed under version control and propagated to multiple reports. These change control aspects are important over the extended life cycles generally associated with mission critical enterprise systems.

Informetric Systems is an Emerson Automation Solutions Alliance Program Member. InfoBatch provides out-of-the-box support for Emerson DeltaV™ and Syncade™.

Data from anywhere, when you want it, however you want to see it.

## WHAT SETS INFOBATCH APART



### Connectivity

InfoBatch aggregates information from various systems into a single report.

Common data sources include process historians, batch historians, LIMS, MES and ERP systems. InfoBatch offers a library of preconfigured connectors and can be integrated with virtually any database through site configuration.



### Contextualization

InfoBatch report configuration and runtime behavior are based on configurable data models. These models enable data from disparate sources to be contextualized according to a common framework. Example data models include S88 batch procedural model, S95 manufacturing order execution, and sales order/shipment hierarchies.



### Productivity

InfoBatch is a commercial off-the-shelf application, reducing deployment, compliance, and maintenance costs. The InfoBatch query builder and layout editor enable users with limited understanding of the underlying data sources to specify report content and format.

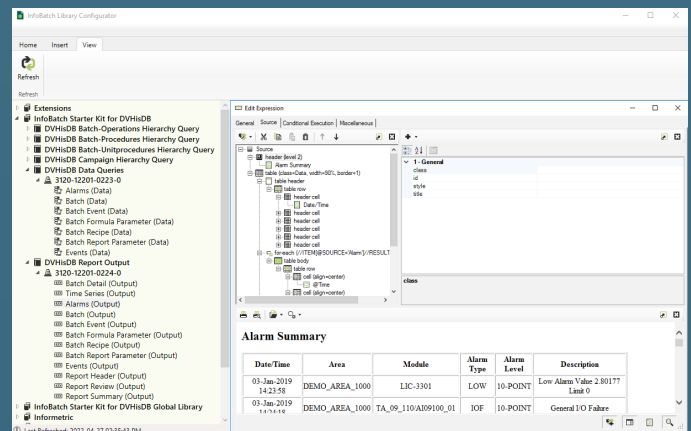
The InfoBatch Library Manager streamlines report configuration by facilitating reuse of common content. Changes to library content are propagated to multiple reports, thus eliminating time-consuming copy-paste activities. The Library also simplifies change control and documentation activities.



### Data Integrity

InfoBatch does not replicate data. Instead, data is retrieved from the original source each time a report is generated. By eliminating replication, InfoBatch avoids many of the cost, complexity, reliability and validation issues associated with other reporting applications.

InfoBatch is well suited to any reporting application which is subject to regulatory oversight, such as life sciences, emissions monitoring and safety-critical systems. InfoBatch was designed from the start to conform to FDA 21 CFR Part 11, Electronic Records and Signatures and Annex 11: Computerised Systems. Rigorous security, audit trails and version control ensure compliance with regulations and simplify life cycle management.



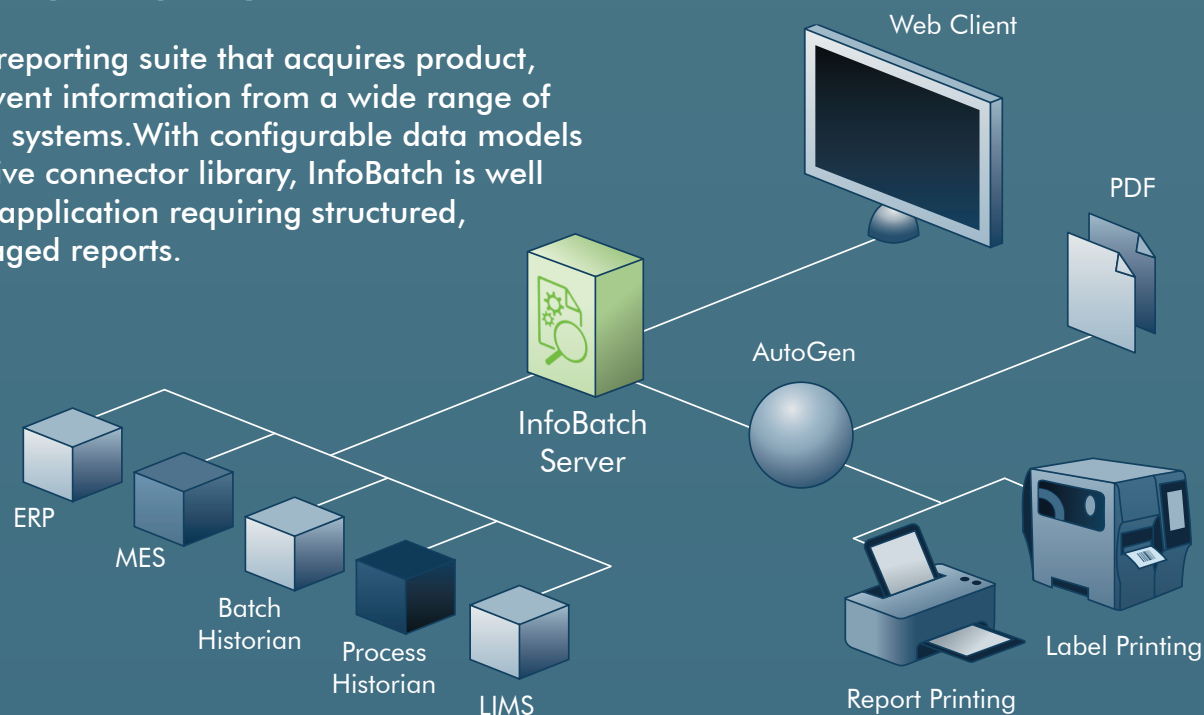
All configuration-affecting report content and layout are managed through the intuitive Configurator.

24/7

Informetric applications are designed for mission-critical production activity, enabling manufacturers to make better decisions.



InfoBatch is a reporting suite that acquires product, process and event information from a wide range of manufacturing systems. With configurable data models and an extensive connector library, InfoBatch is well suited for any application requiring structured, centrally managed reports.



## Applications

Batch Reporting  
Equipment Tracking  
Material Tracking  
Label Printing  
Order Execution History  
Exception Reporting  
Audit Trail Reporting  
Alarm Analysis  
Certificates of Analysis  
Process Analytical Technology (PAT)  
Overall Equipment Effectiveness (OEE)  
Campaign Reporting  
Cycle Time Analysis

121 Chanlon Rd  
Suite 320  
New Providence, NJ 07974 USA  
1.908.918.0111 • [www.informetric.com](http://www.informetric.com)

© 2022 Informetric Systems Inc. All rights reserved.  
InfoBatch is a trademark of Informetric. Company and/or product names may be trademarks, registered trademarks or service marks of their respective owners. The DeltaV logo is a mark of one of the Emerson family of companies.

Publication No. 12210-02112-0

**informetric** **DELTA<sup>TM</sup>V**  
S Y S T E M S

## Model Numbers

3001	InfoBatch Server
3020	InfoBatch Configurator
3040	InfoBatch AutoGen
3050	InfoBatch Web Server
3060	InfoBatch Report History
3111	InfoBatch OPC HDA Connector
3115	InfoBatch ODBC Connector <sup>(1)/(2)</sup>
3120	InfoBatch Connector for DeltaV Batch Historian
3122	InfoBatch Connector for DeltaV Control Studio
3125	InfoBatch Connector for Syncade
3130	InfoBatch Connector for PI
3131	InfoBatch Connector for PI Asset Framework
3140	InfoBatch Connector for AspenTech InfoPlus.21
3150	InfoBatch Connector for Rockwell FactoryTalk Historian
3151	InfoBatch Connector for Rockwell FactoryTalk Batch
3160	InfoBatch Connector for GE Proficy Historian
3170	InfoBatch Connector for AVEVA Historian (Wonderware)
3180	InfoBatch Connector for InfluxDB

Consult Informetric for a complete list of Connectors.

(1) The ODBC Connector can be configured to integrate virtually any database.  
(2) The ODBC Connector also supports OLEDB Connections.

INTEGRATE. AGGREGATE. REPORT.